

VT960ii

Corporate Monitoring System

IT Infrastructure monitoring & Control

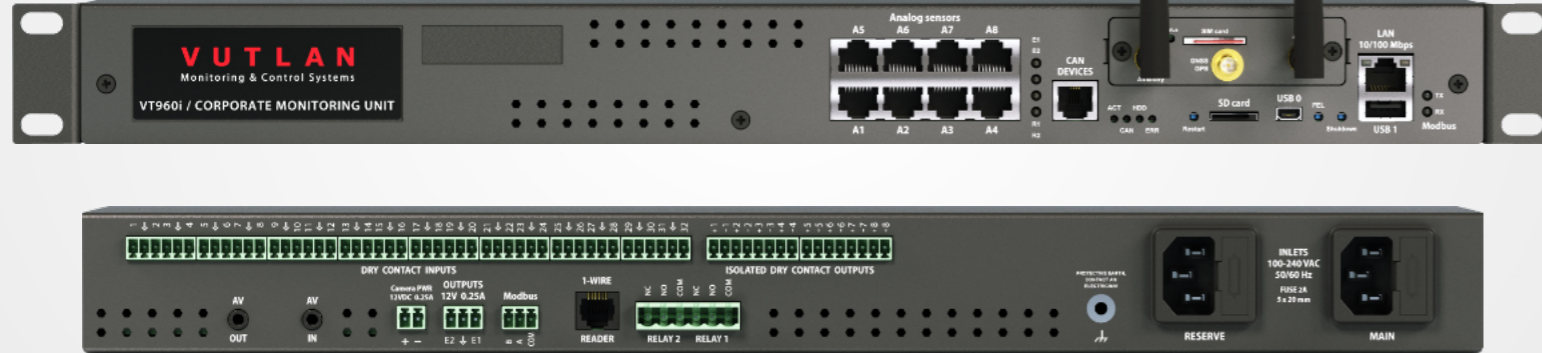


*Monitoring your
infrastructure 24/7*

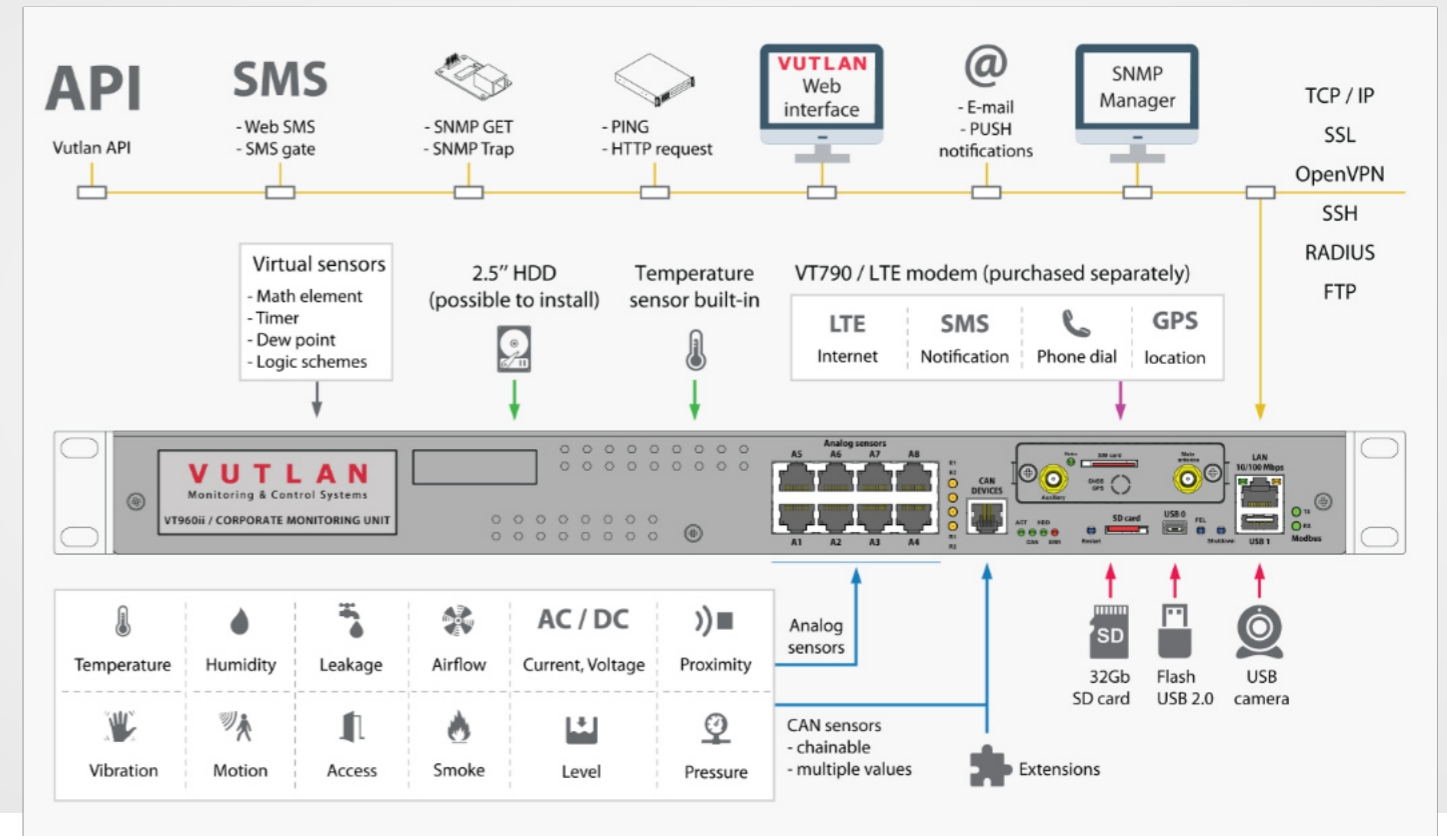
VT960ii

Corporate Monitoring System

Monitor 400 sensors, 2000 elements,
Redundant Power & Network



Example connection

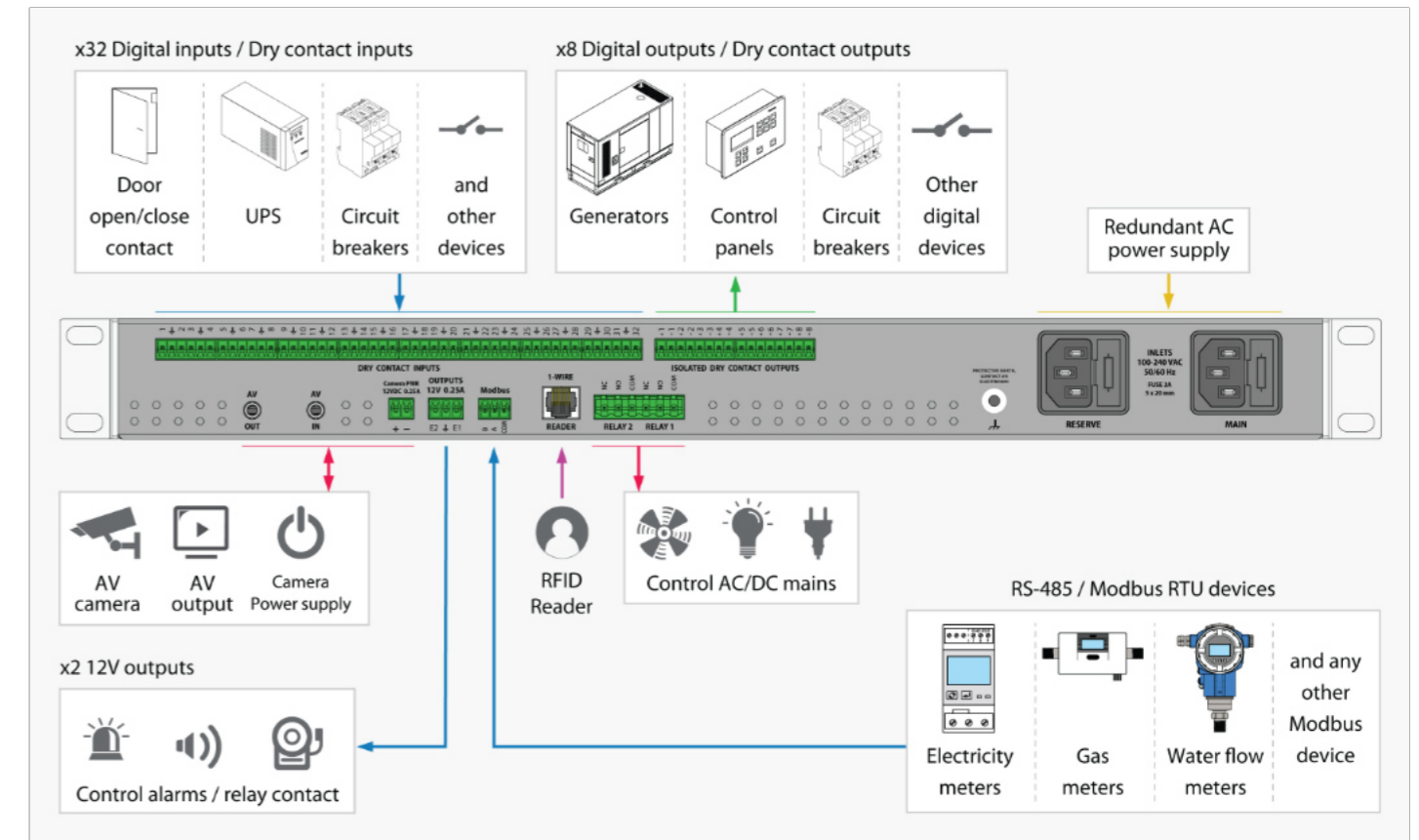


Specifications:

CPU Speed / RAM / OS	720mHz / 4 Cores / 1Gb / Linux v.5.10
Ethernet	10/100Mbps
Redundant power	x2 230 V AC or x2 24-48 V DC power inputs
USB port	x2, For USB camera, USB flash, USB hub
Analog ports	x8 ports for sensors (extendable)
CAN port	x1 port (up to 32 sensors & devices)
Modbus RTU port	up to 32 devices
Dry Contact inputs	x32 digital inputs
Dry Contact outputs	x8 Isolated Digital outputs, max. 24VDC, 15mA
Relays (12VDC)	x2 outputs, 0.25A each
Relays (NC NO COM)	x2 (max. 10A for AC) (9-30V for DC)
RFID reader port	x1 RFID reader
SD card slot	Up to 512 Gb SDHC
LTE slot modem	Ethernet, SMS, GPS (ordered separately)
AV camera:	Audio-video output & input, x1 power output
HDD mount:	Available
Warranty	3 years

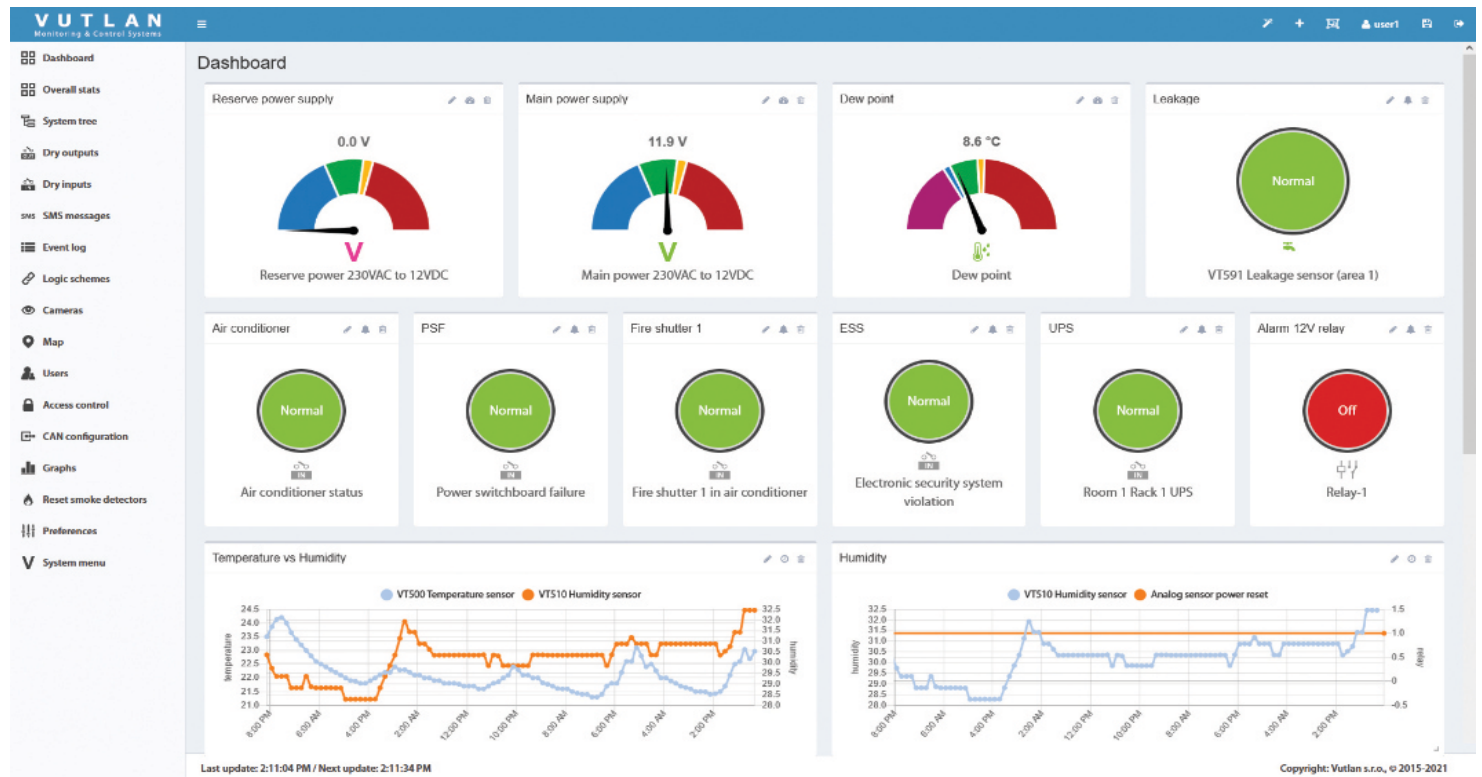
Supports

- Centralized Monitoring & Control**
 - Responsive Web Interface
 - SNMP v1, v2c, v3
- Scalability**
 - Extension units, LTE modem, RFID
 - Modbus TCP/IP, 4-20mA, 0-10V, Analog, CAN
- Improved security**
 - OpenVPN, SSL, HTTPS
 - Three-tier data access permissions with login
- Protocol support**
 - DHCP, HTTP, HTTPS, DynDNS, SMTP, RADIUS, Syslog, NTP server, HTTP request
- API**
 - Application Programming Interface
 - Source available on-line
- System Usability**
 - Multi-language mobile interface
 - First-time wizard
 - Sensor graphing for single and multiple sensors
- Virtual sensors / devices / elements**
 - PING, Timers, Triggers, Logic schemes, SNMP GET
 - IP cameras, Groups, Math
- Notifications and alerts**
 - E-mail, SMS, Phone dial, SNMP Traps, Web-to-SMS, SMS link
- Logging**
 - SD card, USB flash, E-mail, FTP



Monitor & Control

- Humidity
- Motion
- SNMP Trap, Get
- Smoke
- Modbus TCP/IP, RTU
- Relays
- Temperature
- Leakage
- Vibration
- Contacts
- Access
- Airflow
- Proximity
- Pressure
- Level
- PING
- AC / DC Power
- 4-20mA
- Alarms

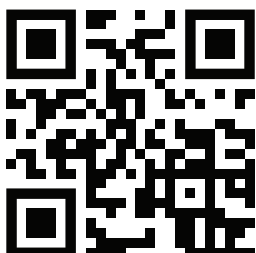


Vutlan Partner Network

Vutlan is working with Distributors / Solution Providers and Integrators all around the world.

+50
BRANCHES

+37
COUNTRIES



Vutlan s.r.o. (LTD)
43 ul.Svornosti,
82106, Bratislava,
Slovak Republic, E.U.
T: +421 2 4524 1440
E: sales@vutlan.com
www.vutlan.com

VUTLAN
Monitoring & Control Systems